

Global UT



Global Ambition



UT's ambition is to deliver impact for society, where it is most needed.

To enrich Tennessee through international development, global awareness, and service on the world stage so that the University of Tennessee Knoxville fulfills its promise as a modern Land Grant university.



Global Vision

PREEMINENT GOAL

Development and support of a university culture in which global engagement is prioritized and encouraged.

GOAL 1

Student Success:
Educate students to transcend national and cultural boundaries.

GOAL 2

Support faculty, staff, and students' ability to extend their research across the world with international partnerships

GOAL 3

Cultivation of relationships with our international alumni and key stakeholders of the university

Center for Global Engagement

The Center for Global Engagement (CGE) is the university's hub for global education, research, and engagement activities. cge.utk.edu



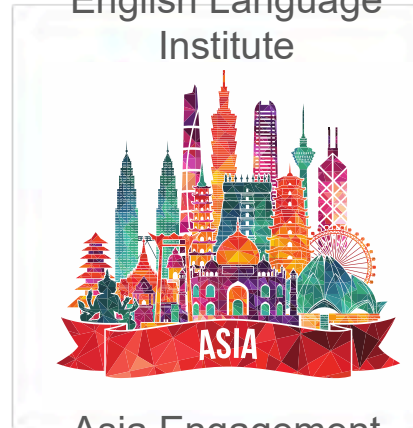
Programs Abroad
Office



International Student
and Scholar Services



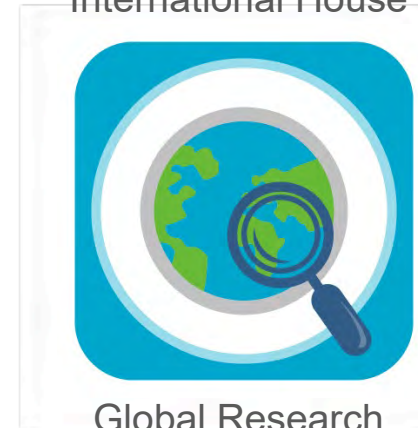
English Language
Institute



Asia Engagement



International House



Global Research

A World of Possibilities



Enhancing your global network both on and off campus.



Communicating the story of your research



Proposal development and submission



Partnership development grants



Global programming for your classes

- Hosting visiting scholars
- Short term and academic based English language training for students and partners
- Connecting you and your global work to the local community.
- Innovating pedagogy for global academic experiences you will lead.

International Travel



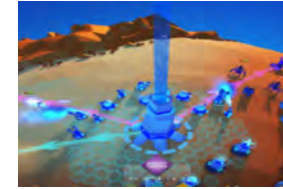
Time to familiarize yourself with Concur and the International Travel Registry process



You must use World Travel and a UT Travel Card for International Travel



Please register your travel!



Visit UT alumni while abroad!



Work with Global Research Office for travel questions and needs.

In the State of Tennessee

(AY 2021–22)

7,270

Total International
Students

2,799

Jobs Created or
Supported

\$260.2 million

Economic impact
(AY 2021–22)

*Data provided by NAFSA: Association of International Educators for academic year 2021–22

OVERALL

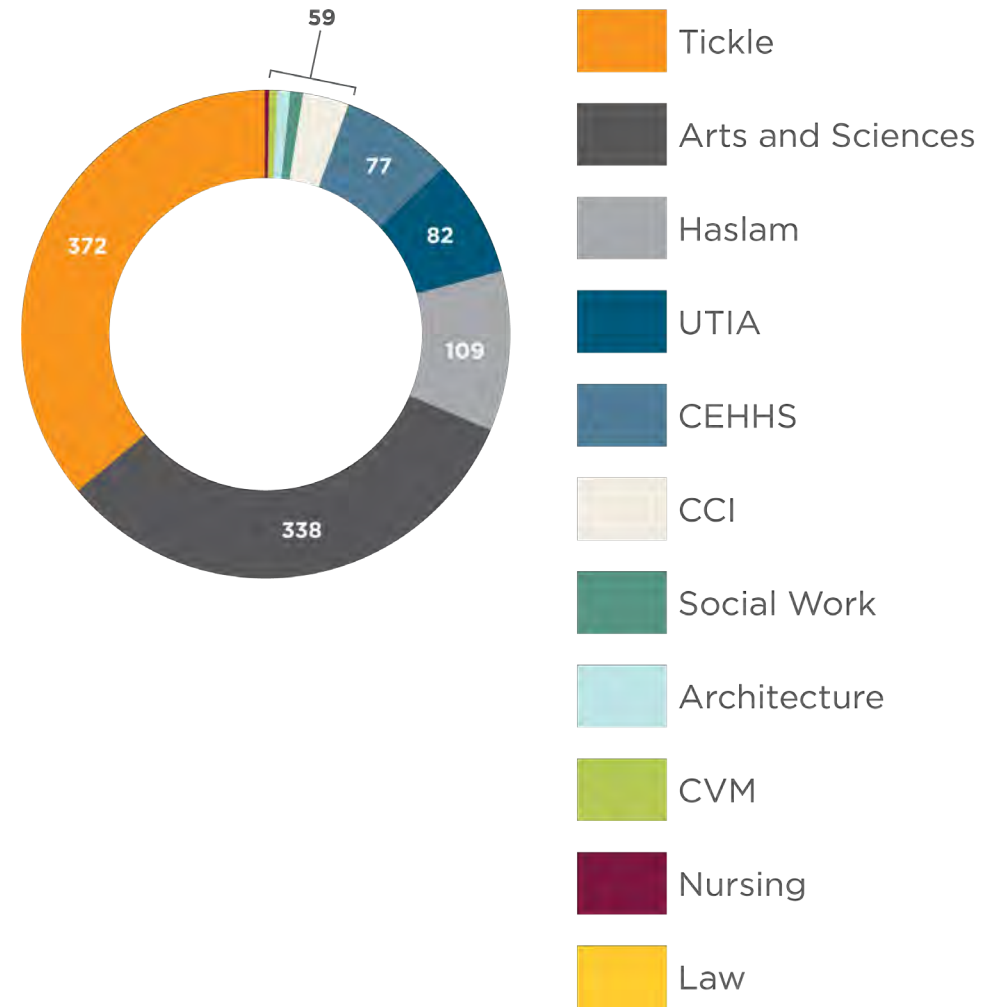
1,108

Total International Students

Spring 2023

International Students by College

Spring 2023

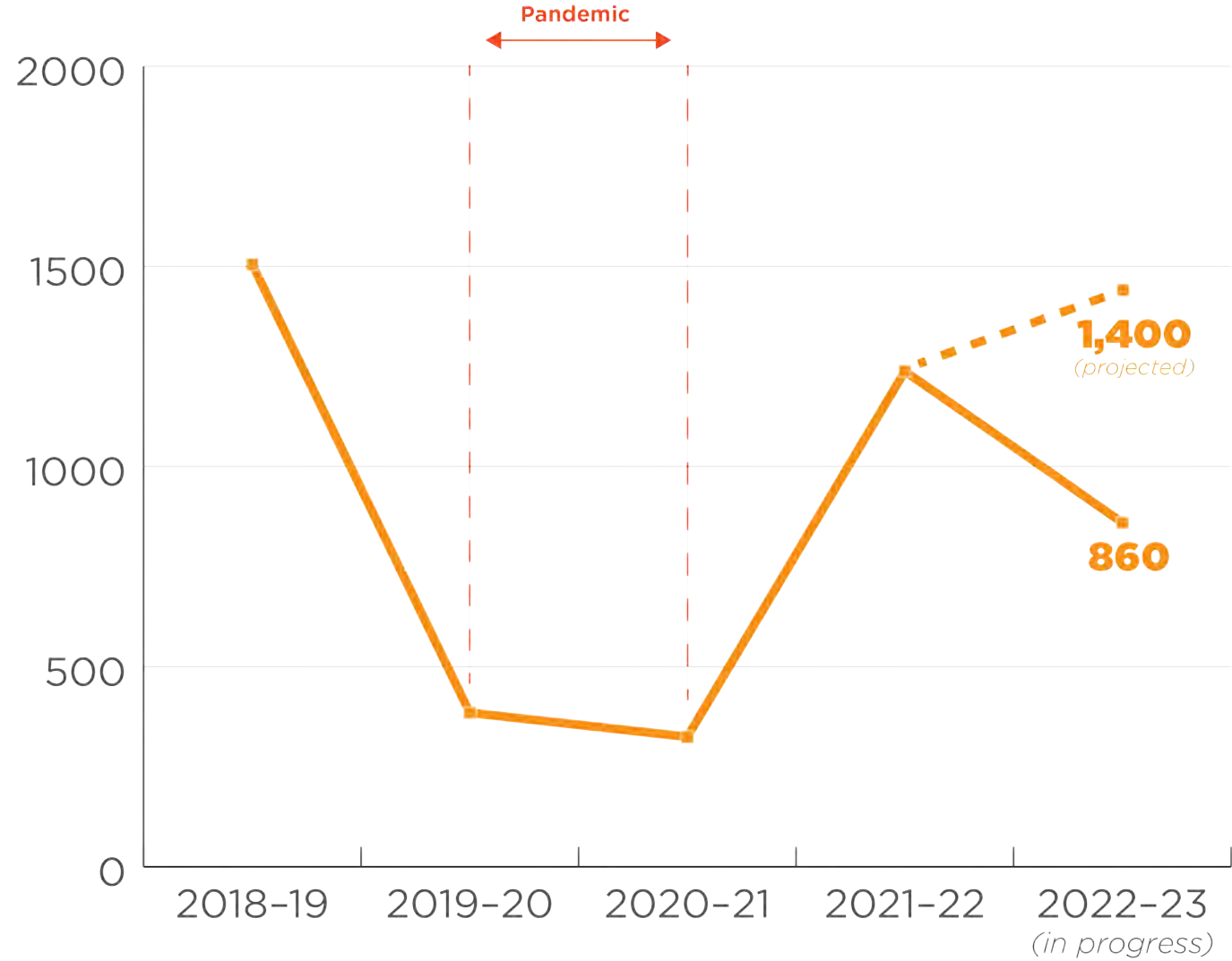


1,238

Students Studied Abroad

AY 2021-22

Students by Academic Year



Extending Research Internationally

GLOBAL RESEARCH

25 **\$155,000**

Grants Awarded Per
Year

Amount Awarded Per Year to Seed Global
Research

ASIA ENGAGEMENT

- Created in 2019
- Summer 2022 delegation to Japan
- Sister city partnership with Muroran City
- Spring 2023 Japanese Business Roundtable



Impact Indicators: UTK and UTIA Journal Articles 2014–18

	Published <i>with</i> INTERNATIONAL COLLABORATORS	Published <i>without</i> INTERNATIONAL COLLABORATORS
Total No. of Publications	5,848	8,294
Times Cited	157,196	106,871
CNCI	2.16	1.14
% Publications in Top 1%	5.8%	1.3%
% Publications in Top 10%	24.6%	13.1%
% Publications in Q1 Journals	63.3%	52.1%
H-Index	146	94

Innovation Sustainable Development Goals

CGE's Efforts to Track and Engage UN Sustainable Development Goals

In partnership with the Office of Institutional Research and Assessment and the Office of Research and Engagement, CGE is working to identify UT's areas of excellence across campus to track our impact on the UN SDG's.



“Over time, we hope to capture more ways that our community engages the SDGs – whether its through research, teaching or engagement. Our goal is to showcase the extent to which our campus is engaging sustainable development.”

-Mike McKinney
SDG Faculty Fellow

Innovation Academy for Global Scholars

Academy for Global Scholars Collaboration with Division of Enrollment Management

The Academy for Global scholars is a program for first-year students that provides them with a unique opportunity for global engagement and individual growth. The Academy offers a sense of community and prepares students for the global workplace.

Participants join by invitation and engage as a cohort in FYS 101 and a general education course, cultural programming, service activities, and a study abroad experience. 22 first-year students joined the inaugural cohort of AGS.

“Being a part of AGS has made me want to celebrate every culture that will come into my classroom, understand them, and communicate with them.”

- Anna Trevathan, AGS

“I see AGS helping me learn new skills like communication and networking so that I can give back to my community.”

- Natalia Acuna, AGS

Contact us! cge@utk.edu

The screenshot shows the website for the Center for Global Engagement at the University of Tennessee, Knoxville. The browser is Safari, and the address bar shows cge.utk.edu. The page features a navigation menu on the left with options like Home, About, and Stay Informed. The main content area includes an 'About' section with a description of the center's mission and a list of responsibilities. Below this is an 'Organizational Chart' section. At the bottom, there are social media links and a list of CGE departments.

Center for Global Engagement

A mes yeux rien n'est plus important

About
Reporting directly to the Office of the Provost, the Center for Global Engagement works to lead, coordinate, and support the university's strategies for global education, research, and engagement.

Organizational Chart

CONNECT ON SOCIAL MEDIA
Tweets from @UTKGlobal [Follow on Twitter](#)

CGE DEPARTMENTS
[Asia Engagement](#)
[English Language Institute \(ELI\)](#)
[Global Research Office](#)
[International Student and Scholar Services \(ISSS\)](#)
[International House \(I-House\)](#)
[Programs Abroad \(Study Abroad\)](#)



FINDING COMMUNITY

New Faculty Orientation | August 9, 2023

Javiette Samuel, PhD
Associate Vice Chancellor

Division of Diversity and Engagement
Office of Community Engagement & Outreach



THE UNIVERSITY OF
TENNESSEE
KNOXVILLE

Flagship Land-Grant University

Created by the Morrill Land Grant College Act of 1862.

UT received designation in 1869 bringing funding, growth, and expansion.

Since then, principles of teaching, research, and engagement have permeated throughout our strategic plan, departments, units, and centers.



Chancellor's Vision

Vision

A world enriched by our ideas, improved through action, and inspired by the Volunteer spirit of service and leadership.

Mission

We are a diverse community with a shared commitment to discovery, creativity, learning, and engagement.



Chancellor's Bold Vision

Goals

1. Cultivating the Volunteer experience.
2. Conducting research that makes life and lives better.
3. Ensuring a culture where Vol is a verb.
4. Making ourselves nimble and agile.
5. Embodying the modern R1, Land-grant University.



Framework for Inclusive Excellence



Office of Community Engagement and Outreach

- Supports faculty, staff, students, and external stakeholders and their ideas to create or enhance mutually beneficial, sustainable community partnerships and engagement initiatives that make a difference.
- Advances the flagship, R1, land-grant mission.
- Rooted in equity and shared decision-making.
- Provides resources to develop your ideas into an engagement or outreach project.
- Serves as a bridge between UT and the community.
- Actively engages with community leaders to address grand challenges through outreach and community-engaged scholarship.
- Serves as point of contact for a variety of university-wide strategic partnerships.
- Leads large-scale initiatives such as the Carnegie Community Elective designation and Engagement Scholarship Consortium membership.



Office of Community Engagement and Outreach Portfolio

Engagement and Outreach

- K-12/Pre-collegiate
- Families, Health & Wellness
- Business, Nonprofits & Government

Community Engaged Scholarship

- Annual Engagement and Outreach Conference
- Community Engagement Academy
- Community Engagement Seminar Series
- Community University Research Collaboration Initiative
- Carnegie Classification
- Community Engaged Research Group
- Broader Impacts & Broadening Participation

Faculty Engagement, Recruitment, and Retention

- Research Development Academy
- Faculty Women of Color in the Academy
- Women of Color Circle
- Faculty Advisory Board
- Faculty Fellows
- Competitive Funding
- Challenge Grant, Engagement & Outreach Grant & Sponsorship
- Access, Education & Opportunity Funds

Engagement and Outreach

Strategic Partners



**Knoxville Area
Urban League**



**change
center**



Engagement and Outreach

K-12/Pre-Collegiate Programs

Flagship High Schools, Project GRAD, Emerald Youth, Boys & Girls Club, Centro Hispano, Urban League, Shoes for School, Etiquette Luncheon, Girl Talk, THRIVE Knoxville, Sneaker Ball, 4-H

Families, Health & Wellness

Health Department, Family and Consumer Science

Business, Nonprofits & Government

Change Center, United Way, Grandparents as Parents, Safety City, Alliance for Better Nonprofits, Asian Festival



Flagship High Schools/Flagship Communities



MLK Events & Juneteenth Parade



Shoes for School & UT Family Fun Day

August 5



Asian Festival



World's Fair Park

August 26

10:00 a.m.-8:00 p.m.

<http://www.knoxasianfestival.com>

Community-Engaged Scholarship

Community Engagement Academy Call for Applications

[Community Engagement Academy](#) (CEA) is an interdisciplinary professional development program designed for new UTK faculty (0-3 years), postdocs, and graduate students who want to learn the foundations of community engagement and engaged scholarship and apply knowledge to research and practice.

CEA provides background literature, facilitated discussion, mentoring, and presentations designed to increase their knowledge and enhance the practice of community engaged scholarship throughout Knoxville and East Tennessee by creating new partnerships and/or building upon existing ones.

For full consideration, apply at <https://diversity.utk.edu/office-of-community-engagement-and-outreach/>.

Inquiries should be sent to communityengagement@utk.edu.

Community Engagement Seminar Series

The monthly webinar series covers a variety of topics such as the following. Sessions are open to all members of the campus community. Learn more here: <https://diversity.utk.edu/office-of-community-engagement-and-outreach/>.

- Community Engagement 101: Best Practices and Definitions
- Building Partnerships in Knoxville and Surrounding Areas
- Working With Diverse Audiences: Cultural Humility and Community Engagement
- Best Practices in the Classroom With Community-Engaged Learning
- Equity in Community-Engaged Work
- Broader Impacts and Broadening Participation
- Publishing Community-Engaged Scholarship

6th Annual Engagement and Outreach Week

October 2-6



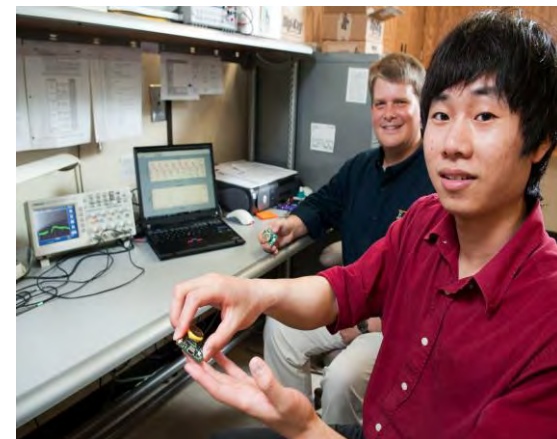
Faculty Engagement, Recruitment & Retention

Faculty Recruitment, Engagement, and Retention

- Research Development Academy
- Community Engagement Academy
- Faculty Women of Color in the Academy
- Women of Color Circle
- Faculty Fellows
- Competitive Funding
- Challenge Grant, Engagement and Outreach Grant, and Sponsorship
 - RFP closes September 15
- Access, Education & Opportunity Funds



-
- UT Inclusive Leadership Academy
 - Faculty and Administrative Fellows Program
 - ASCEND



Community of Scholars (CoS)

- CoS Program was launched by the [Office of Research](#) to encourage the growth of research affinity groups that cross disciplinary boundaries.
- Each CoS is composed of UT researchers from multiple departments, colleges, and/or units, united by a shared research theme or topic area, and organized to share research capabilities, assess collective research strengths, and explore opportunities for collaboration.

Partners

- Provost Office
- Office of Research, Innovation, and Economic Development
- Office of Ombuds Services
- Human Resources
- Teaching and Learning Innovation
- Center for Global Engagement
- Dean of Students
- Multicultural Student Life
- Black Cultural Center
- Title IX
- Student Disability Services
- Veterans Resource Center

Faculty Space

Coming Soon!

<https://tiny.utk.edu/faculty-spaces>

Campus Resources

Division of Diversity and Engagement
<https://diversity.utk.edu/>

Office of Community Engagement and Outreach
<https://diversity.utk.edu/office-of-community-engagement-and-outreach/>

Mattering and Belonging
<https://belong.utk.edu/>

Center for Global Engagement
<https://cge.utk.edu/about/>

Office of Ombuds Services
<https://ombuds.utk.edu/>

Commission for Black Communities
<https://cfb.utk.edu/>

Commission for LGBT People
<https://cflgbt.utk.edu/>

Commission for Women
<https://cfw.utk.edu/>

Council for Diversity and Inclusion
<https://cdi.utk.edu/>

Intercultural Development Inventory
<https://diversity.utk.edu/professional-development/intercultural-development-inventory/>

Building Community on Campus

Chancellor's Commissions and Council



**COUNCIL FOR
DIVERSITY &
INCLUSION**



**COMMISSION FOR
ASIAN AMERICANS &
PACIFIC ISLANDERS**



**COMMISSION FOR
BLACKS**



**COMMISSION FOR
DISABILITY**



**COMMISSION FOR
LATINX PEOPLE**



**COMMISSION FOR
LGBT PEOPLE**



**COMMISSION FOR
WOMEN**

Chancellor's Commissions and Council

- Diversity commissions and council serve the campus under the direction of the Division of Diversity and Engagement (DDE).
- Commissions and council ensure that students, staff, and faculty from underrepresented groups have a welcoming, supportive, and inclusive climate campus.
- DDE works in partnership with commissions and councils to provide additional support and resources to confirm an inclusive culture and climate can be achieved.
- Together, DDE and the commissions and council work to foster and maintain a climate of equity and inclusion for all Vols.



Initiatives

- Intercultural Development Inventory
- National Coalition Building Initiative
- UT Inclusive Leadership Academy
- Uconnect
- Cost of Hate Series
- Intergroup Dialogue
- Diversity Speaker Series
- Diversity Symposium
- Continuing Education on Racism
- VolCore Planning Lunches
- Pop up courses
- Women in Business, Entrepreneurship and Leadership Summit
- College of Communications and Information Experience Diversity Banquet,
- Veteran's Salute
- United at the Table "Finding Common Ground: Empathy Training"
- Authentic Selves, Authentic Communities
- Community Engagement Seminar Series
- Community Engagement Academy

Education and Training

- Walking Our Talk: Commitment to Cultural Diversity and Social Justice
- Authentic Selves, Authentic Communities
- Walking Our Talk: Doing Our Part to Ensure All Vols Belong
- Assessing Your Cultural Competency
- Bias-Free and Inclusive Language
- Navigating Racism and Bias: A Panel Discussion Supporting UT and the Local Asian Community in Unprecedented Times

Building Community in the Greater Knoxville Area

Community Building/Knoxville Resources

- [Community Diversity, Equity, and Inclusion Resources - Diversity and Engagement \(utk.edu\)](#)

Thank You!

Javiette Samuel
Associate Vice Chancellor &
Director of Community Engagement and Outreach

jsamuel@utk.edu

865-974-4863